



PROVINCIAL ELECTORAL DIVISIONS OF ALBERTA

AS DEFINED BY THE ELECTORAL DIVISIONS ACT, 2017

Base data provided by:
Government of Alberta
Alberta Health Services
City of Edmonton
City of Calgary

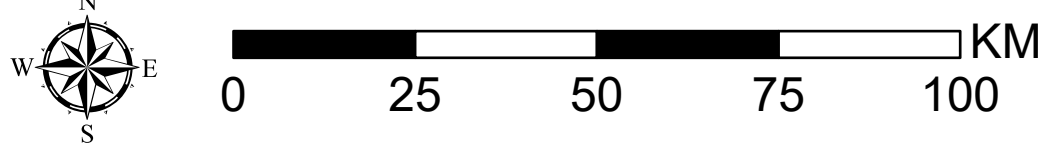
© 2022 Government of Alberta

ELECTORAL DIVISION AS DEFINED BY
THE ELECTORAL DIVISIONS ACT, 2017
VOTING AREAS REVISED 2021/2022
RELEASE DATE: DEC 2022

PROJECTION:
NAD 83 10TM
AEP FOREST

Tel: 780-427-7191
Fax: 780-422-2900
E-mail: info@elections.ab.ca
Toll free: 310-0000 then
780-427-7191
www.elections.ab.ca

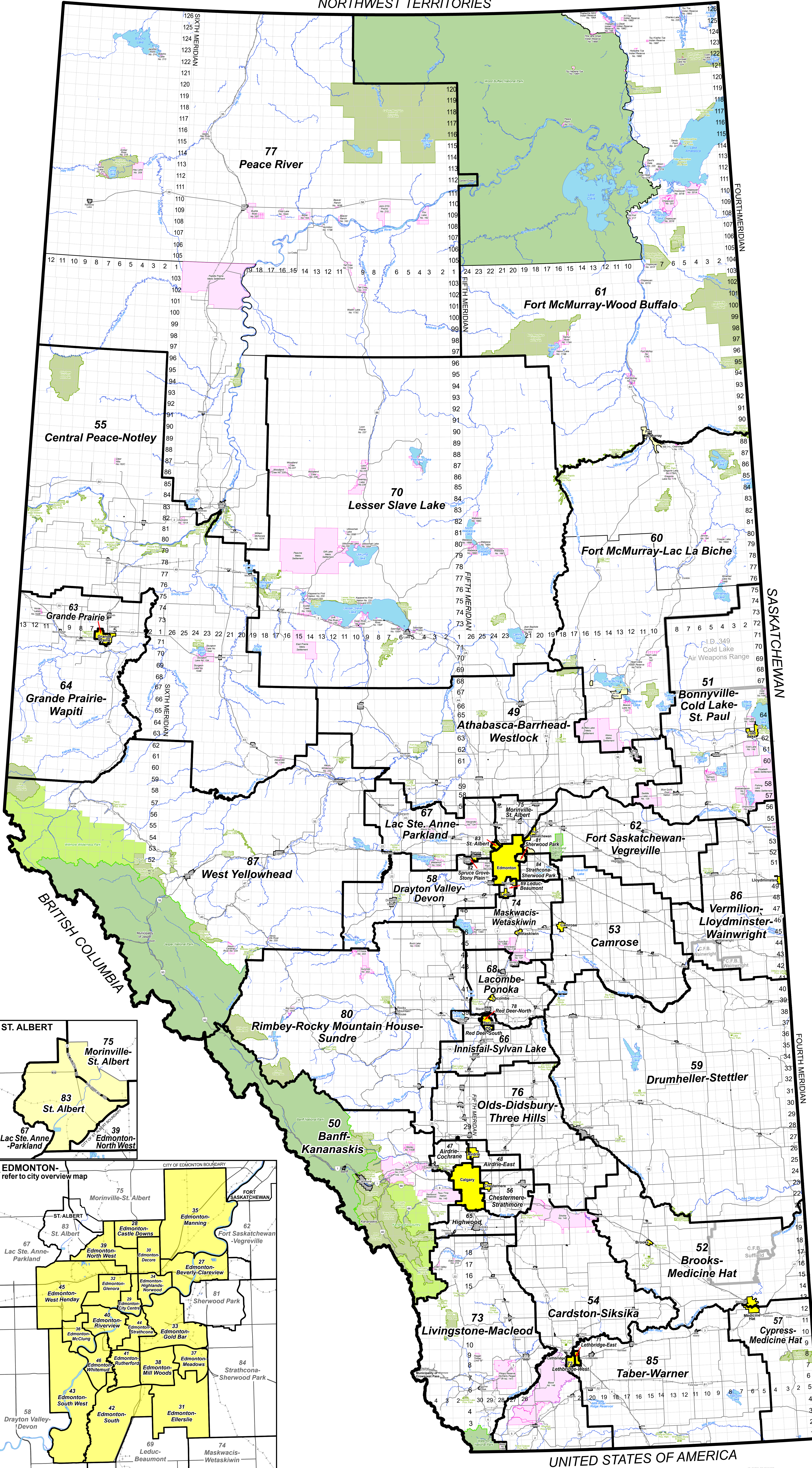
Scale = 1:1,040,000



Legend

- City
- Town
- Village
- UrbanServiceArea
- Metis Settlement/Indian Reserve
- ProvincialPark
- NationalPark

NORTHWEST TERRITORIES



SASKATCHEWAN

FOURTH MERIDIAN

UNITED STATES OF AMERICA

